

## Student Directions

### VAPA Content Standards Met:

- 1.1 Identify and use the principles of design to discuss, analyze, and write about visual aspects in the environment and in works of art, including their own.
- 1.4 Analyze and describe how the composition of a work of art is affected by the use of a particular principle of design.
- 1.6 Compare and contrast similar styles of works of art done in electronic media with those done with materials traditionally used in the visual arts.
- 2.1 Solve a visual arts problem that involves the effective use of the elements of art and the principles of design.
- 2.2 Prepare a portfolio of original two-and three-dimensional works of art that reflects refined craftsmanship and technical skills.
- 2.3 Develop and refine skill in the manipulation of digital imagery (either still or video).
- 2.6 Create a two or three-dimensional work of art that addresses a social issue.
- 3.2 Identify and describe the role and influence of new technologies on contemporary works of art.
- 4.1 Articulate how personal beliefs, cultural traditions, and current social, economic, and political contexts influence the interpretation of the meaning or message in a work of art.
- 4.2 Compare the ways in which the meaning of a specific work of art has been affected over time because of changes in interpretation and context.
- 4.3 Formulate and support a position regarding the aesthetic value of a specific work of art and change or defend that position after considering the views of others.
- 4.5 Employ the conventions of art criticism in writing and speaking about works of art.
- 5.2 Create a work of art that communicates a cross-cultural or universal theme taken from literature or history.

## PhotoShop – Text Styles Assignment

1. Select File > New
2. Type in name: LN\_FN\_Text\_Styles\_WC
  - a. Width = 4 inches
  - b. Height = 6 Inches
  - c. Resolution = 300
  - d. Mode = RGB color
  - e. OK
3. NOTE: WC = Working Copy
  - a. This helps you protect your project incase you make a mistake.
4. You now have a “canvas” to work on.
  - a. You can check if you set it up right if you select Image > Image size...
  - b. Your projects MUST be in the right size and resolution as directed or your prints will get messed up.
  - c. You can also check canvas size by setting the document image information box to Document Dimensions.

**LN = Last Name**  
**FN = First Name**  
**WC = Working Copy**  
**orig = original**

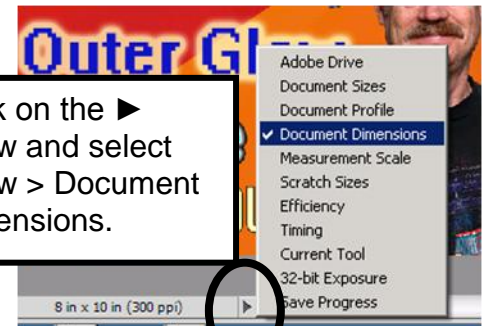
### 5. How to Save files

- a. Select File – Save as...
- b. Navigate to H:\DOCS\Photo1\_[last name]\_1stSem\Text\_Styles folder
- c. Format: Make sure it is a PSD [PhotoShop doc]
  - i. You will turn in as a JPEG later.

**ii. Save PhotoShop files as PSD documents, NOT as a JPEG or you will lose your layers.**

**1. You will save them as a JPEG for turning in. There is a special procedure for doing this.**

- d. Press the Save button.
- e. You need to always save to the proper location with the proper name.
- f. You will be graded on your file organization.
  - i. You will create a DVD of your files which I will grade.

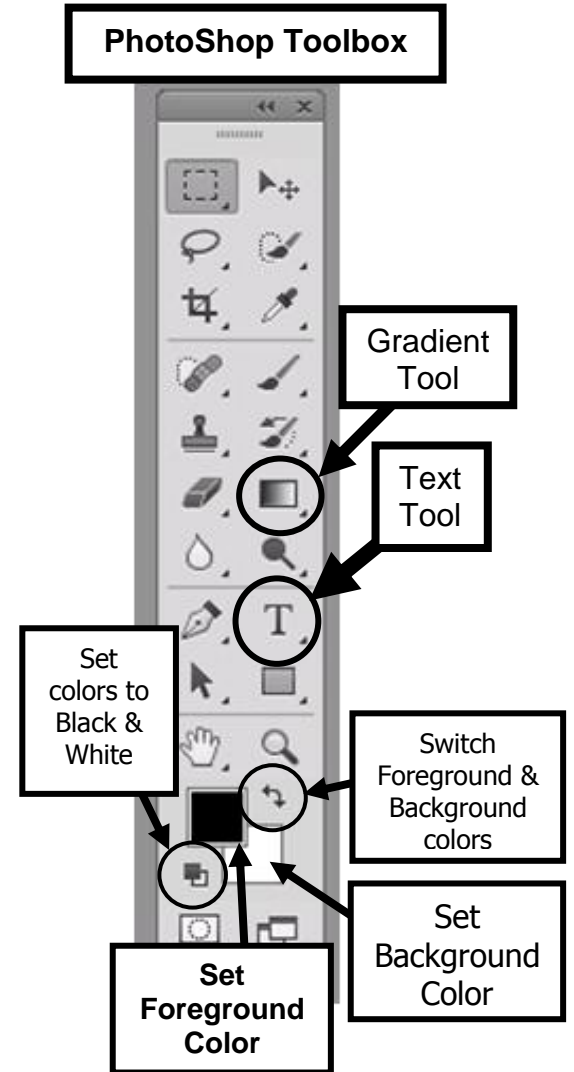
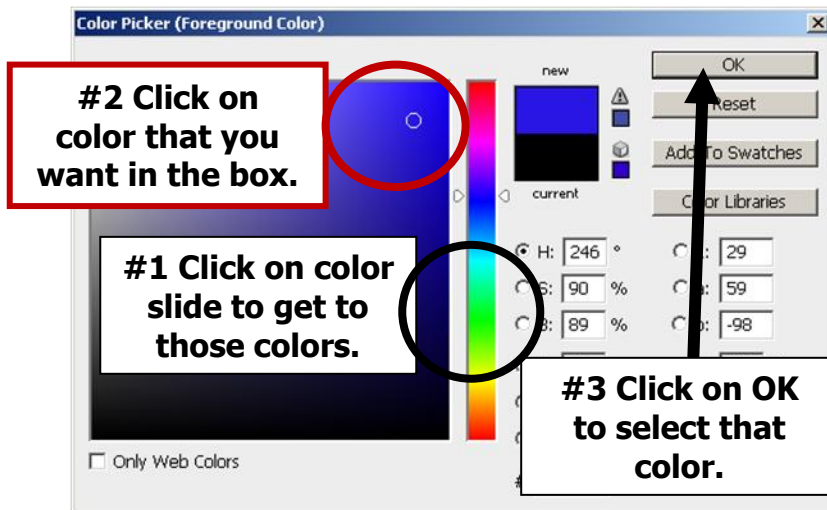


**Working with your Canvas:**

1. CTRL+ makes larger
2. CTRL- makes smaller

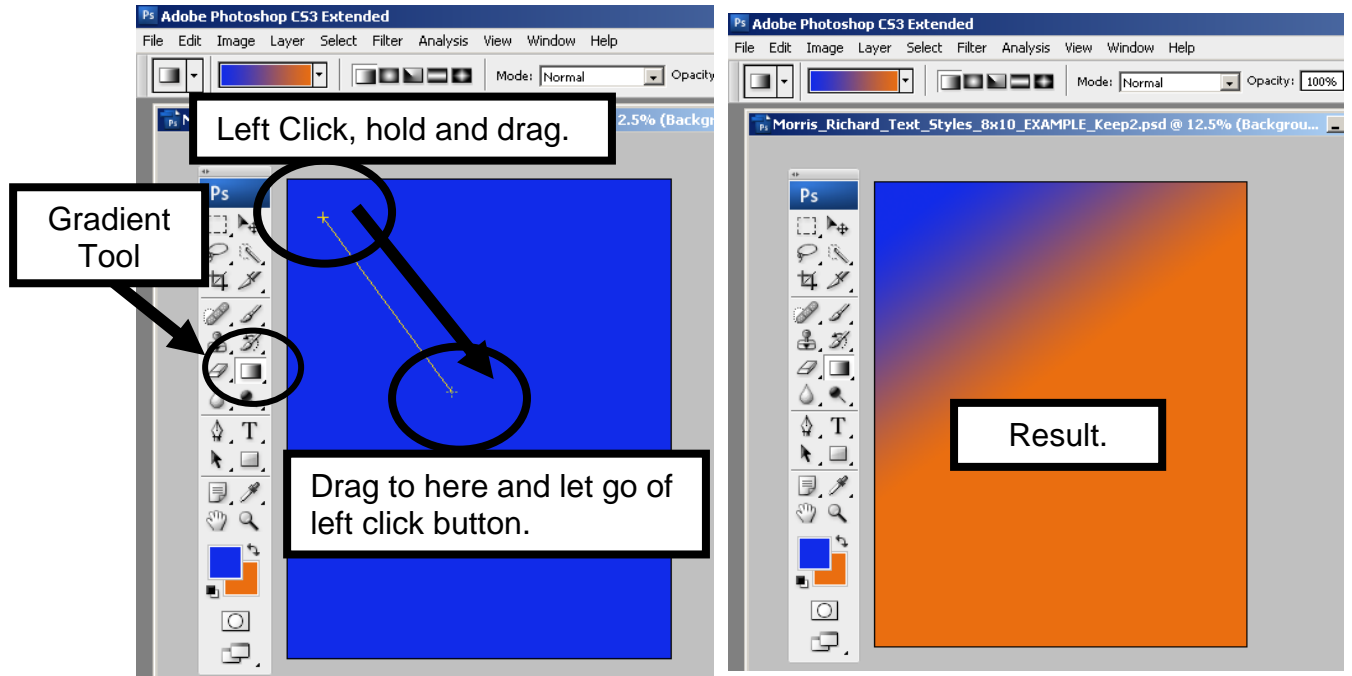
**Setting Foreground & Background Colors:**

1. Choosing Colors:
  - a. Click on the Foreground color
    - i. Choose a color and click OK.
  - b. Click on the Background color.
    - i. Choose a color and click OK.
2. Click on the Background Layer in the Layer tab
3. CTRL+A – select the whole canvas
  - a. Look for the dotted lines
4. Select Edit > Fill...
  - a. Foreground color
  - b. 100 %

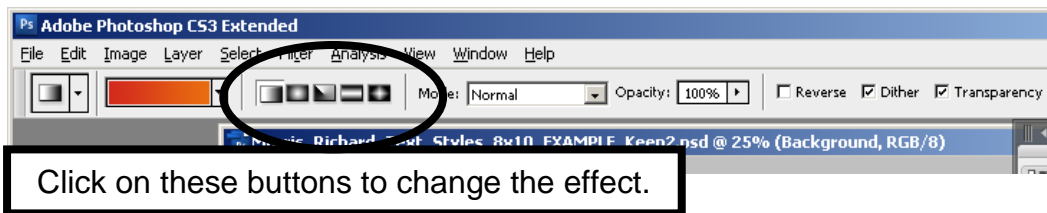


**Working with the Gradient Tool:**

1. Select Gradient Tool from the PS Toolbox.
  - a. Select the button in the Gradient toolbar.
    - i. Left click in your canvas and drag to get effect.

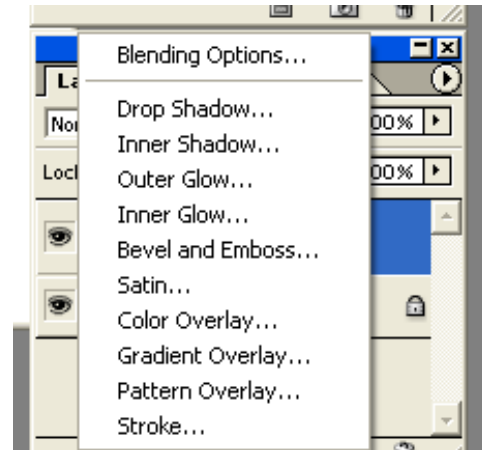
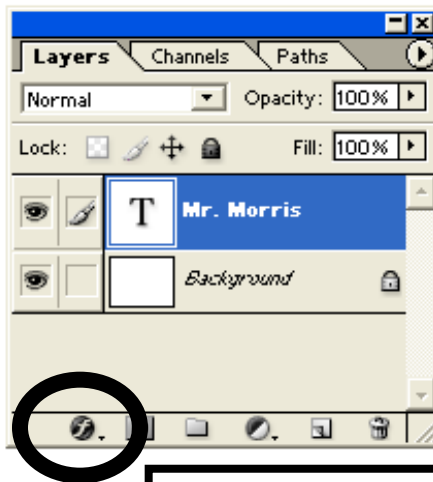
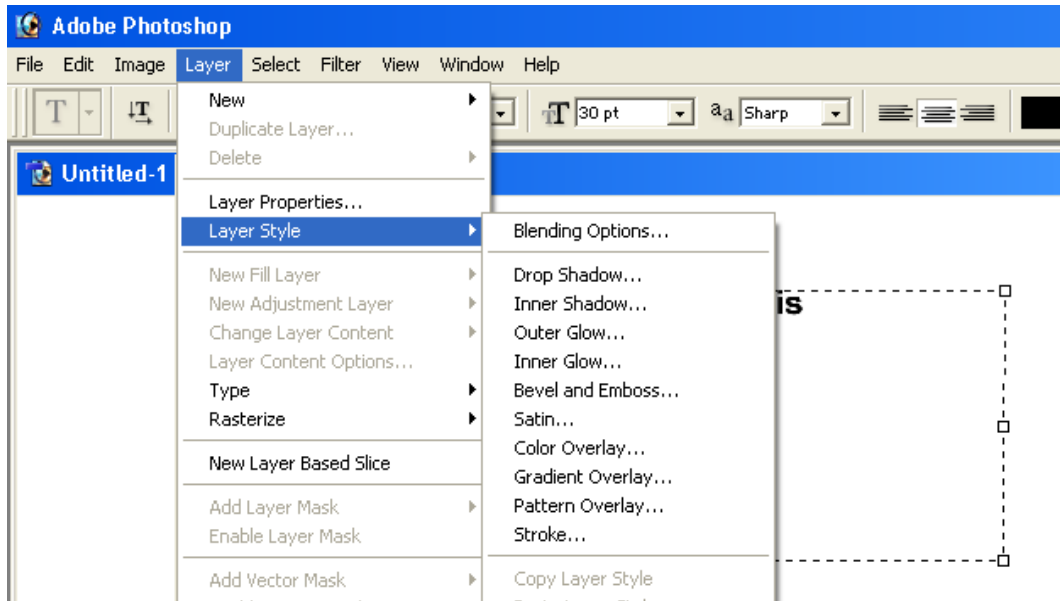


2. Click on the different Gradient Tool buttons and see what they do.
  - a. Left click and drag to see what each does.



Adding Text and applying a Layer Style to it:

1. Select the Text Tool from the PhotoShop Toolbox
  - a. Make it a different color from your background so that it will show up.
  - b. Make a box. Type in your First and Last name
2. Changing Layer Style
  - a. Click on the Layer that you want to change.
  - b. Select Layer – Layer Style



Clicking on the *fx* will bring up the Layer Styles also.

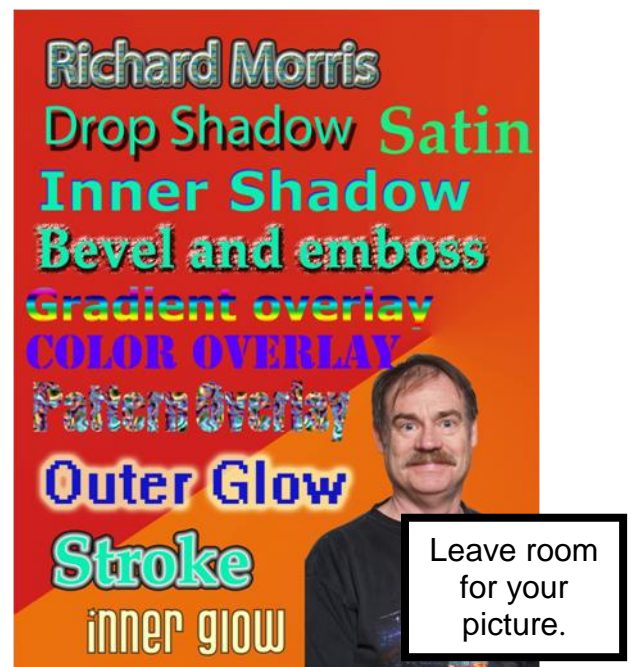
3. Layers
  - a. PhotoShop works in layers.
  - b. NEVER change your original.
  - c. ALWAYS make changes to a layer

## TEXT Styles Assignment

1. Type in the name of the Layer Style and then
  - a. Apply **ONLY THAT LAYER STLYE** to those words.
    - i. This way you can see what each layer style does and you will have the name of it to remind you of what it does.
  - b. Use 10 DIFFERENT Font Styles.
    - i. **Be sure the Font Style and Font Size allows the Layer Style to be obviously demonstrated. If not, make the Font Size larger or change the Font Style.**
      1. If I can't tell what the Layer Style is, it is wrong.
      2. Change your color(s) as needed so that I can see the words and Layer Style against your chosen background.
  - c. You should have these words and their associated layer style applied to them:
    1. Drop Shadow
    2. Inner Shadow
    3. Outer Glow
    4. Inner Glow
    5. Bevel and Emboss
    6. Satin
    7. Color Overlay
    8. Gradient Overlay
    9. Pattern Overlay
    10. Stroke
  - d. Do NOT cover your picture with your words.
  - e. **Be sure to keep your text and picture ¼" away from the sides of the canvas.**
    - i. **Note: Bottom of picture must touch the bottom of the canvas.**
2. Type your First and Last name into one text box
  - a. Apply 3 – 4 Layer Styles to it.
3. Type "Period X" [where X = your period #] into another text box
  - a. Apply a variety of Layer Styles to it.

### **Words away from sides:**

1. Keep your words about ¼" away from the sides. If the words are too close to the sides, they may get cut off when printed.



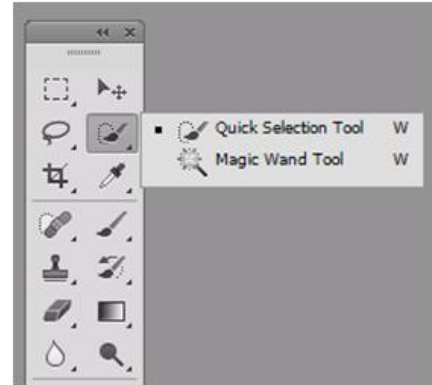
# Photo 1

## Student Directions

### Add Your Picture

## Text\_Styles

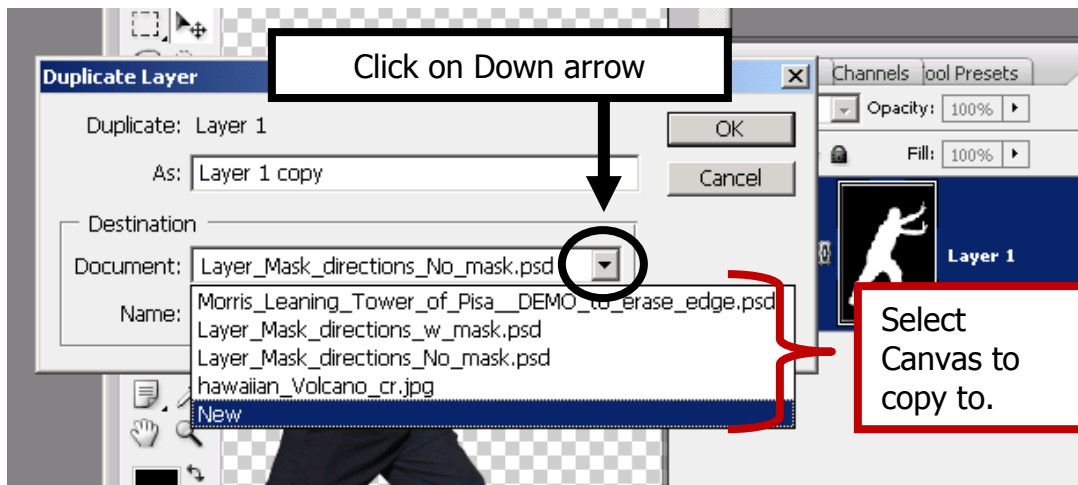
1. Get your picture
  - a. Use My Computer
    - i. Navigate to where your picture is.
    - ii. Right click on it and Copy
    - iii. Navigate to your H:\DOCS\Photo1\_[last name]\_1stSem\Text\_Styles folder
    - iv. Right click and Paste your picture in that folder.
    - v. Right click on your picture file and Rename it.
      1. Add \_orig to the end
2. Open your picture in PhotoShop
3. Immediately, Save As...
  - a. File name: LN\_[project name]\_Mug\_WC
    - i. i.e. Morris\_Text\_Styles\_Mug\_WC
  - b. Format: PhotoShop PSD
4. **Extract your picture.**
  - a. See file How\_to\_Extract\_w\_Layer\_Mask\_and\_Copy\_to\_new\_canvas\_Web\_directions
    - i. Be sure to use a Layer Mask!
    - ii. The Quick Selection tool works the best for this assignment.
  - b. After you have cleaned up your picture be sure to SAVE it!



## 5. Copying your picture to your Text\_Styles canvas :

Duplicate completed “Extracted” picture with its Layer Mask to new background picture:

- Right click on the Layer you want to duplicate [do NOT right click on the thumbnails].
- Select Duplicate Layer...
- Duplicate Layer dialog box:
  - Click on the ▼ arrow.
  - Select the file to copy to and Press OK.
- Your “extracted” picture is now on the other canvas for you to work with.

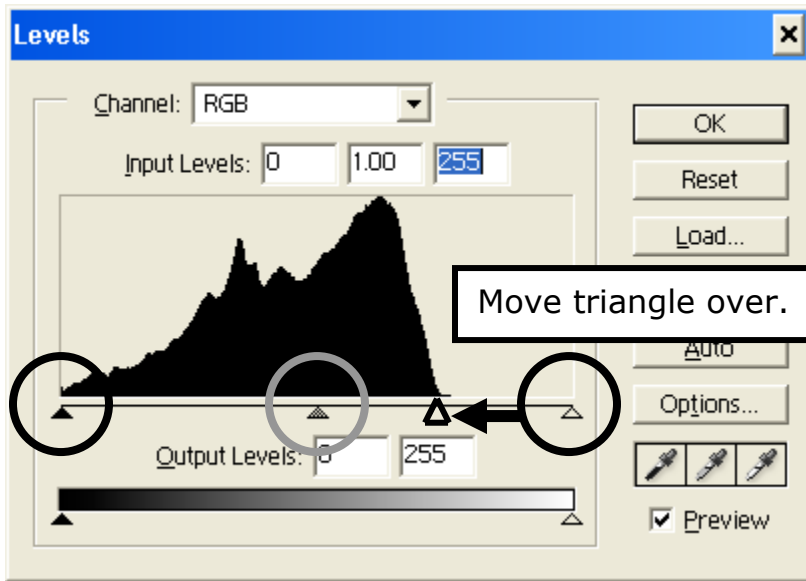


## 6. Resize your picture

- You need to resize your picture so that you have room for the text that you have added **AND** to make it appropriate for the assignment.
- See file How\_to\_Resize\_Pics\_directions\_web for how to do this.

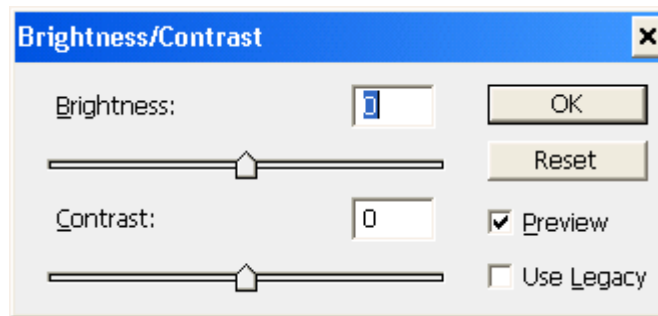
**How to Adjust Levels and Contrast**

1. Use Levels to change the Color and Tonal highlights, shadows, and midtones of your picture.
2. You will probably need to do this if you took your pictures on a cloudy and/or rainy day.
3. Select Image > Adjustments > Levels...
  - a. Move the triangles to adjust the levels of each tonal area of your picture.
  - b. Channel: RGB

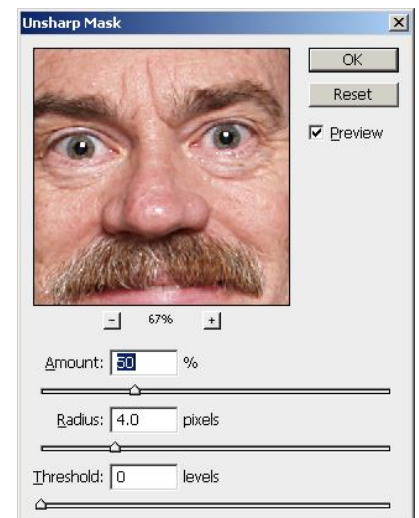


NOTE: If you have an "empty area", move that triangle to where the black starts.

4. Select Image > Adjustments > Brightness/Contrast...
  - a. Adjust as needed.

**Sharpening your picture:**

1. Filter > Sharpen > Unsharp Mask...
2. Settings:
  - a. Amount: 50
  - b. Radius: 2
  - c. Threshold: 0 or 2 [See what looks better.]
3. You can left click and drag inside the picture to get to an area to see what happens.
4. You can click on the – and/or + to change the size as you need.
5. Press OK





**How to Save Text Styles assignment as a JPEG**

1. First, save your project [should already be a PSD]
  - a. You should just have to press CTRL+S
  - b. LN\_FN\_Text\_Styles\_WC
    - i. WC = working copy

**2. Check your file size!!**

- a. Select Image > Image size...
  - i. Look at Width, Height, and Resolution
    1. W = 4"
    2. H = 6"
    3. Resolution = 300
- b. IF wrong, fix or start over.

LN = Last Name  
FN = First Name  
WC = Working Copy  
orig = original

3. Next, File > Save as...
  - a. Save to your H:\Docs\Photo1\_[last name]\_1stSem\Text\_Styles folder.
  - b. File name: Change WC to Final
    - i. LN\_FN\_Text\_Styles\_Final
    - ii. i.e. Morris\_Richard\_Text\_Styles\_Final
  - c. Format: Change to JPEG
    - i. If it asks you to save layers, say NO
    - ii. JPEG options dialog box
      1. Image Options – Quality:
        - (a) Choose 12 Maximum
      2. Press OK

**How to turn in the Text Styles assignment**

1. DO NOT drag and copy your file to the Y:\ directory stated below.
  - a. For some reason, the file gets “locked” and it cannot be graded.
2. Select Start > My Computer
3. Navigate to your Photo1\_[last name]\_1stSem\Text\_Styles folder
  - a. Right Click on your LN\_FN\_Text\_Styles\_Final.jpeg file and select Copy
  - b. Navigate to S:\Communications\Photography\4000 – Photo 1\  
Student Drop\Teacher\Assignment folder
  - c. Right Click and select Paste to place a copy of your file into the specified directory.
    - i. DO NOT put in the Graded folder or I will not grade it.
4. Fill out Grading sheet and turn in.